

## Hydraulic Self-Cleaning Control Valve

Hydraulic Self-Cleaning Control Valves are three-way control valves that working with an external air pressure or line pressure by filtration systems. The valve system works in coordination with filter elements in filtration and self-cleaning mode. The valves flap diaphragm assembly works 2 sides. While turning form filtration mode to self-cleaning mode, the valve paves the way by changing the direction of discharge flap. In this way, it cleans the filter elements by preventing the mixing of dirty water with clean water.



**3"x 2" – 4"x 3" FLANGED**  
GG25, GGG40, PN10, PN16



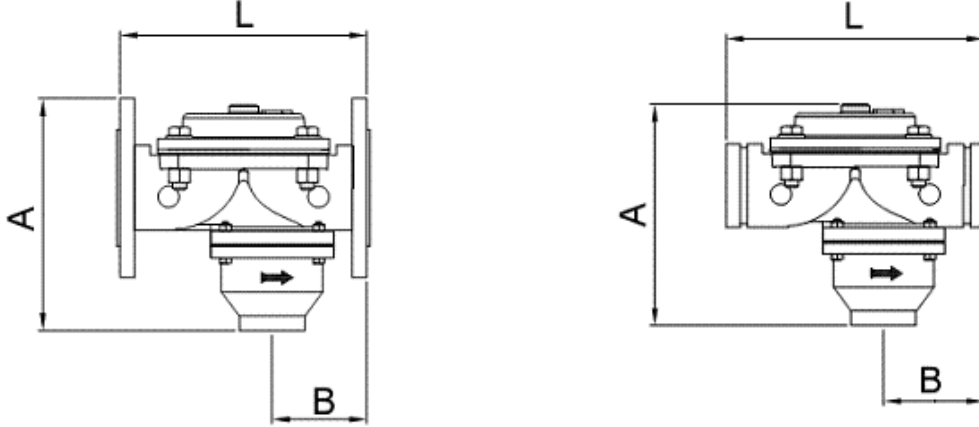
**3"x 2" – 4"x 3" VICTAULIC**  
GG25, GGG40, PN10, PN16

### Features:

<b>Body</b>	: Casting
<b>Inside Set</b>	: 204 Quality Chrome
<b>Paint</b>	: 2 Floors Electrostatic Powder Coating
<b>PN Class</b>	: PN 10, PN 16 Standarts
<b>Connections Bolts</b>	: 8x8 Galvanized Steel
<b>Connetion Types</b>	: Flanged and Victaulic
<b>Models</b>	: 3" Hydraulic Valve Back Washing (3"x 2" X 3") 4" Hydraulic Valve Back Washing (4"x 3" X 4")

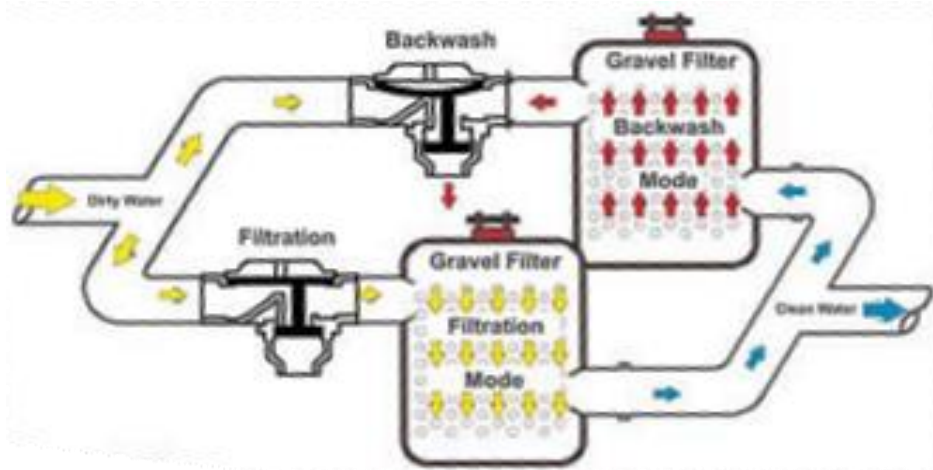
## Hydraulic Self-Cleaning Control Valve

### Valve Sizes:



Ürün Kodu Product Code	Bağlantı Connecting	Giriş-Çıkış In-Out	Tahliye Drenaj	mm		
				A	B	L
HTYV-30	Kaplin (Victaulic)	3"	2"	245	112	287
HTYF-30	Flanş (Flanges)	3"	2"	258	101	287
HTYV-40	Kaplin (Victaulic)	4"	3"	255	127	317
HTYF-40	Flanş (Flanges)	4"	3"	275	117	317

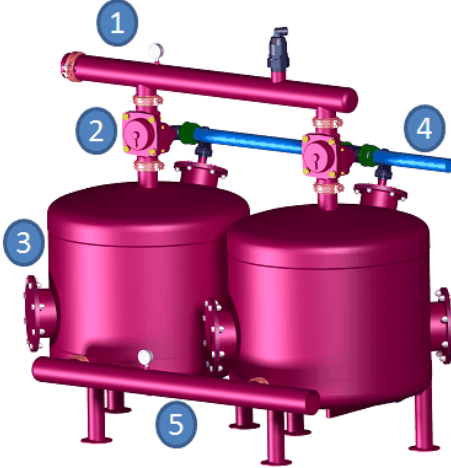
### Self-Cleaning Working:



Made in TURKEY

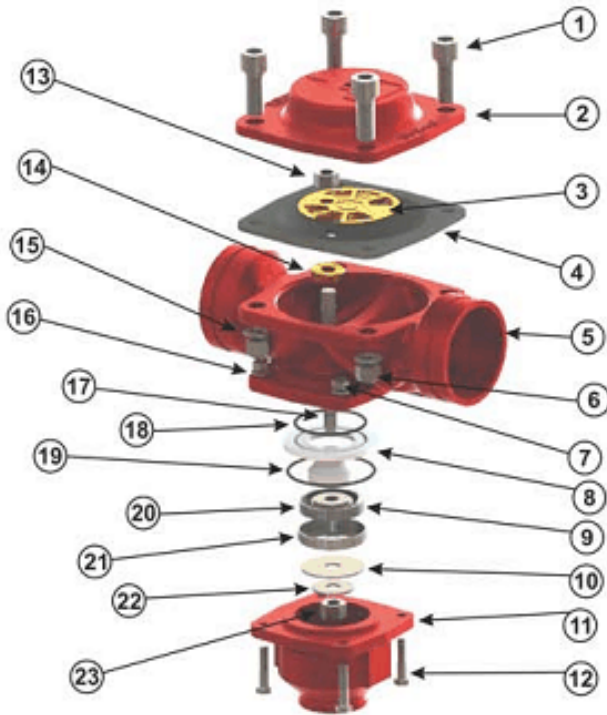
## Hydraulic Self-Cleaning Control Valve

### Valve Connection:



- 1 – Inlet collector
- 2 – Hydraulic Self-Cleaning Control Valve
- 3 – Gravel Filter
- 4 – Voidance
- 5 – Out collector

### Internal structure:



PART NO	PART NAME	MATERIAL
1	Bolt	ISO 4762
2	Cover	EN GJL-250 GG-25
3	Mounting Aperture	EN 16164-CuZn39Pb3
4	Diaphragm	bez takviyeli doğal kauçuk
5	Body	EN GJL-250 GG-25
6	Bolt Nut	ISO 4034
7	Bolt Nut	ISO 4034
8	Disc	HDPE
9	Ruber	EPDM
10	Stainless Steel Washers(a)	1.4301X5CrNi 18-10
11	Lower Cover	EN GJL-250 GG-25
12	Bolt	ISO 4014
13	Bolt Nut	ISO 4034
14	Brass Washers	EN 16164-CuZn39Pb3
15	Washer	EN ISO 7091
16	Washer	EN ISO 7091
17	Spindle	1.4301X5CrNi 18-10
18	Oring	NBR
19	Oring	NBR
20	Centering Adapter	HDPE
21	Rubber Container	1.4301X5CrNi 18-10
22	Stainless Steel Washers(b)	1.4301X5CrNi 18-10
23	Bolt Nut	ISO 4034